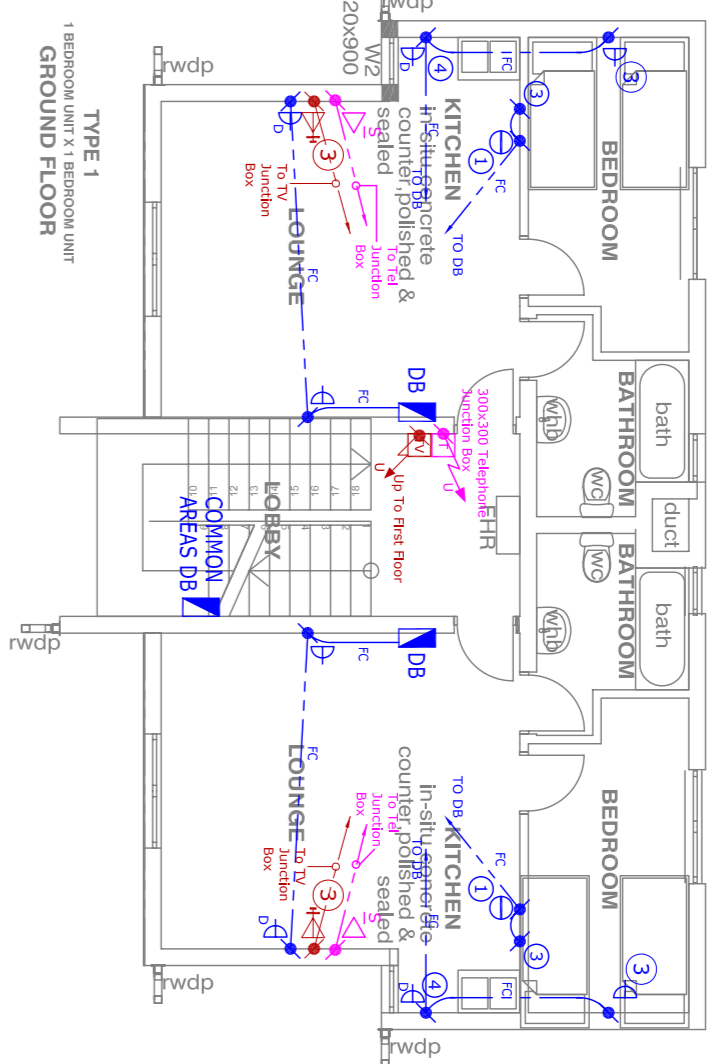


## GENERAL NOTES

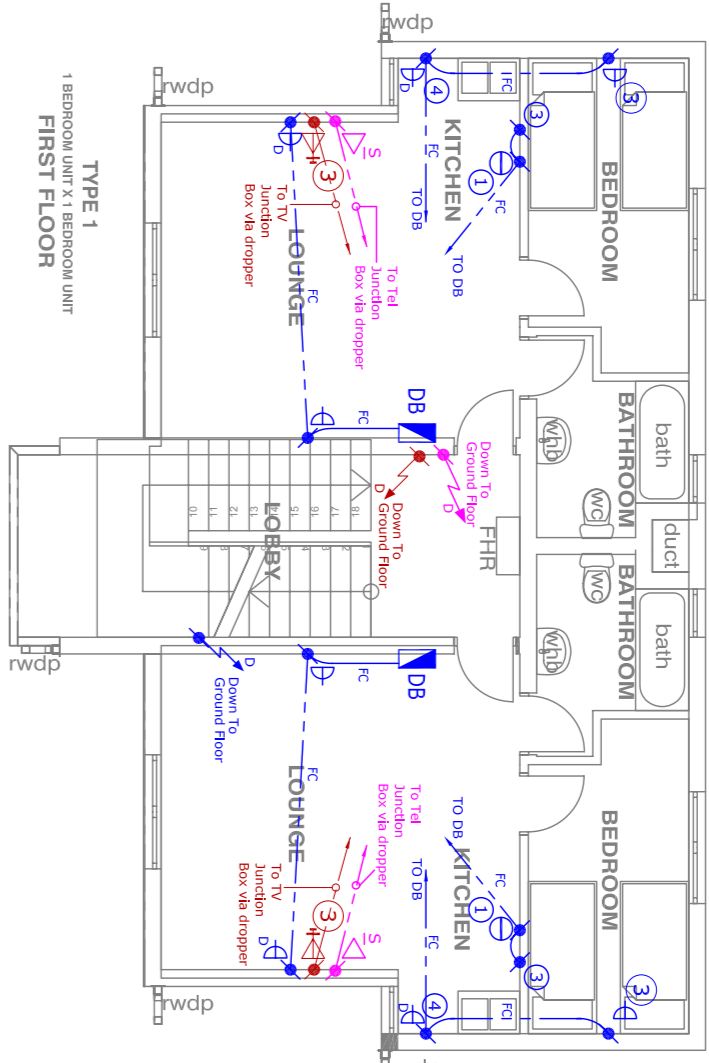
- A) THIS DRAFTING IS TO BE USED FOR ELECTRICAL PURPOSES ONLY.  
B) IT DOES NOT STATE THE DRAWING.  
C) REFER TO ARCHITECTS AND STRUCTURAL ENGINEERS DRAWINGS FOR ALL BUILDING DIMENSIONS, LATEST BUILDING REVISIONS AND SERVICES.  
D) THIS DRAWING IS TO BE READ IN CONJUNCTION WITH THE ELECTRICAL SPECIFICATIONS.  
E) ALL WORK TO COMPLY WITH RELEVANT STANDARD CODES OF PRACTICE, SPECIFICATIONS AND REGULATIONS.  
F) NOT WITHSTANDING ANYTHING TO THE CONTRARY, ALL RIGHTS RESERVED. NO PART OF THIS DRAWING MAY BE REPRODUCED OR TRANSMITTED IN ANY FORM OR BY ANY MEANS, ELECTRONIC OR MECHANICAL, INCLUDING PHOTOCOPYING, RECORDING, OR BY ANY INFORMATION STORAGE AND RETRIEVAL SYSTEM, WITHOUT PERMISSION IN WRITING FROM THE ORIGINAL CONSULTING ENGINEERS.

ELECTRICAL NOTES:

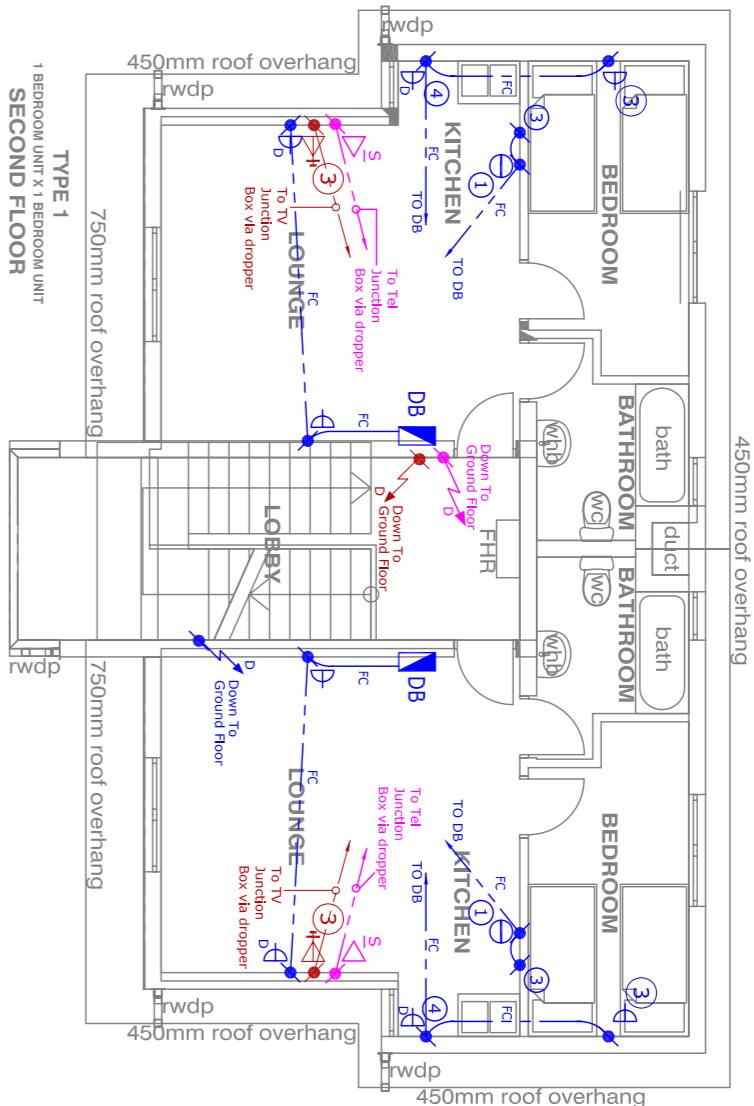
1. 40A DOUBLE POLE ISOLATOR FOR STOVE.
2. 20A DOUBLE POLE ISOLATOR FOR GEYSER
3. @500mm AFFL
4. @1200mm AFFL



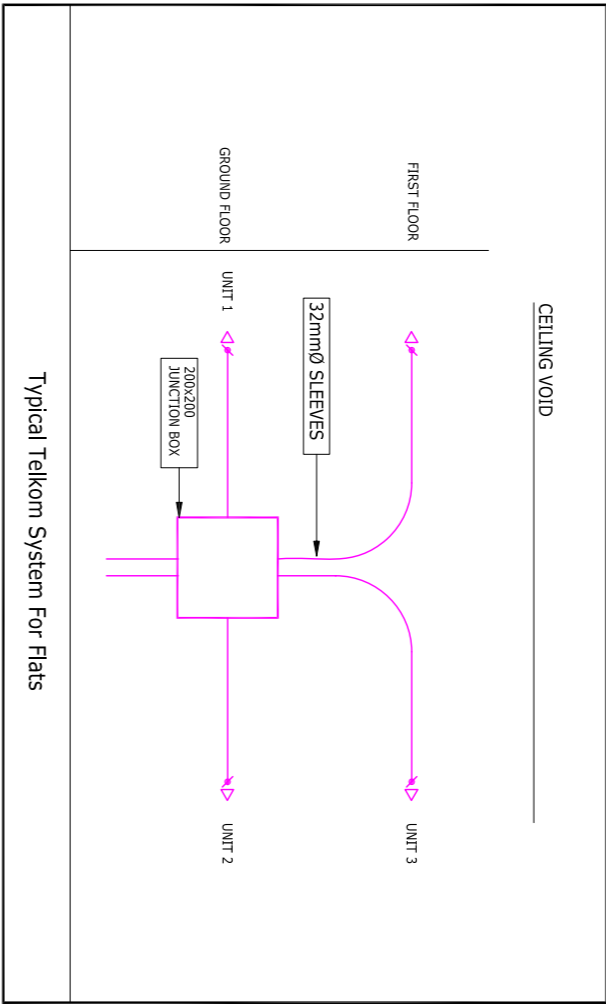
**TYPE 1**  
**1 BEDROOM UNIT X 1 BEDROOM UNIT**  
**GROUND FLOOR**



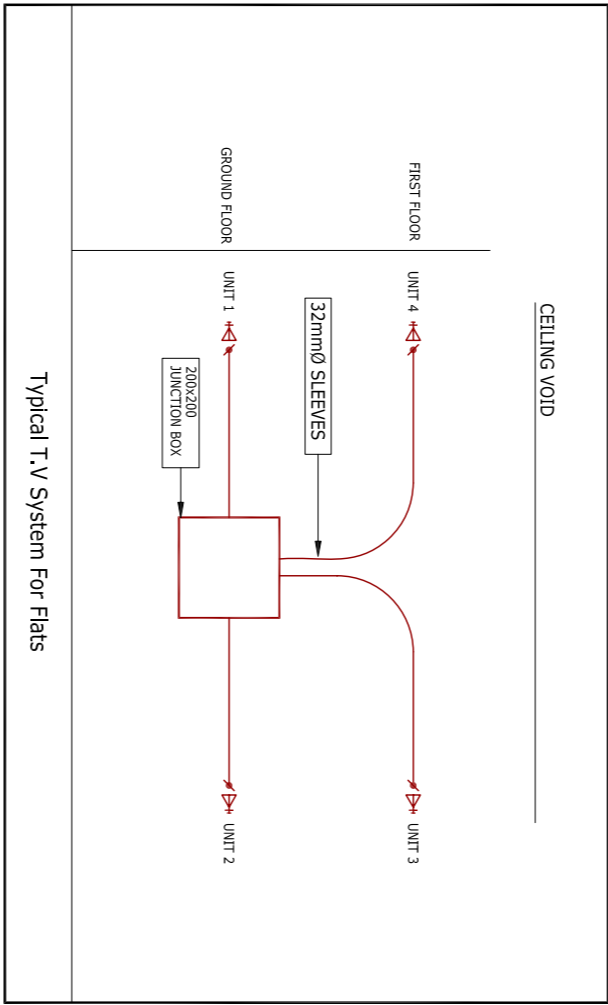
**TYPE 1**  
**1 BEDROOM UNIT X 1 BEDROOM UNIT**  
**FIRST FLOOR**



**TYPE 1**  
**1 BEDROOM UNIT X 1 BEDROOM UNIT**  
**SECOND FLOOR**



### Typical Telkom System For Flats



### Typical T.V System For Flats

[illegible]

**IBU**  
Consulting  
Engineers

**POWERING DEVELOPMENT™**

BLOCK D  
EISENER PARK  
465 EISENER TERRACE  
NORTH AVENUE  
P.O. BOX 1692  
WINDSEBCK 3031  
TEL: +27 (0)31 2667332  
FAX: +27 (0)31 2667340  
Email: [ibue@ibupr.co.za](mailto:ibue@ibupr.co.za)

## PROJECT/SERVICES

Community Residential Units  
KZN

## Electrical Installation

|  |             |          |               |
|--|-------------|----------|---------------|
| TITLE  |             |          |               |
| Typical Ground, First & Second Floor<br>Power for Unit Types 1 & 2 |             |          |               |
| ENGINEER:  | DRAWN BY:   |          | SCALE:        |
| G. Chetty  | C.O.        | Dec 2011 | 1:50          |
| PROJECT NO.  | DRAWING NO. | SHEET:   | PAGE:         |
| 14020  | 200         |          | 1<br>SIZE: A1 |
| FILE:  |             | REV:     |               |
| LAYOUTS  |             | 0        |               |






(2) - Draw boxes required after every second 90 deg. bend or 180 deg. total of slow bends

(3) - All unwired conduits to be provided with draw wires. These will be withdrawn and checked at random.

(4) - Cast in conduits to be spaced 35mm. minimum.

### Typical Ground, First & Second Floor

- S 100X100 CONDUIT BOX.
- S 100X100 CONDUIT BOX AT 300AFL.
- S 100X100 CONDUIT BOX AT 1400AFL.
- S 100X50 CONDUIT BOX
- L 100X50 CONDUIT BOX AT 300AFL.
- L 100X50 CONDUIT BOX AT 1400AFL.
- ROUND CONDUIT BOX.

- |   |                                      |
|---|--------------------------------------|
|  | ROUND DRAW BOX                       |
|  | 100x100 DRAW BOX                     |
|  | 100x50 BOX BEHIND POWER SCURTING     |
|  | CONDUIT TURNED UP ("U" FOR DOWN)     |
|  | DOWN CONDUCTOR TO EARTH OR EARTH TIE |







- DM - DOOR MONITOR  
CAM - CAMERA  
etc.

- 20mm. DIA. COND. ————  
25mm. DIA. COND. ————  
32mm. DIA. COND. ————  
50mm. DIA. COND. ————  
SECTION OF CONDUCTOR  
OMITTED FOR CLARITY  
SURF. ————  
S ————  
TWIN AND EARTH ————  
CABLE ROUTE ————






- |    |  |
|----|--|
| 0C | OVERHEAD CAST-IN                       |
| 0S | OVERHEAD ON SURFACE OR LAID ON CEILING |
| 1C | FLOOR SLAB CAST-IN.                    |
|    |  |
|    | POWER SPLICING                         |
|    | TRUNKING                               |
|    | CABLE SLEEVE.                          |
|    | CABLE TRAY/LADDER                      |






- ☒ 150 SQUARE GALV. STEEL DRAW TRAY SIZE AS SHOWN,  
☐ TELEPHONE JUNCTION BOX,  
☐ INTERCON JUNCTION BOX,  
☐ DATA/COMMS JUNCTION BOX,  
☐ SECURITY, ETC. JUNCTION BOX  
☐ DISTRIBUTION BOARD POSITION,  
 DB-1 BOARD DESIGNATION NUMBER.

- ▷ 16AMP, SWITCHED SOCKET OUTLET (SSO).
- ▷ DOUBLE 16AMP, SSO.
- ▷ 16AMP, SSO ON PEDISTAL.
- ▷ 16AMP, CLEAN SSO WITH RED COVER PLATE, SQUARE EARTH AND PLUS TOP.
- ▷ 16AMP, CLEAN SSO WITH RED COVER PLATE, SQUARE EARTH AND PLUS TOP ON PEDISTAL.
- ▷ 3 PHASE SSO.
- ▷ 13AMP, SQUARE PIN SSO.
- ▷ 16AMP, 3 PIN UNSWITCHED SOCKET OUTLET.


- |   |                            |
|---|----------------------------|
|  | INTERMEDIATE LIGHT SWITCH  |
|  | SINGLE LEVER ONE WAY LIGHT |
|  | TWO WAY LIGHT SWITCH       |
|  | FLUORESCENT LUMINAIRE      |
|  | BULKHEAD/DOWNLIGHTER, ↓    |
|   | WALL MOUNTED LUMINAIRE     |

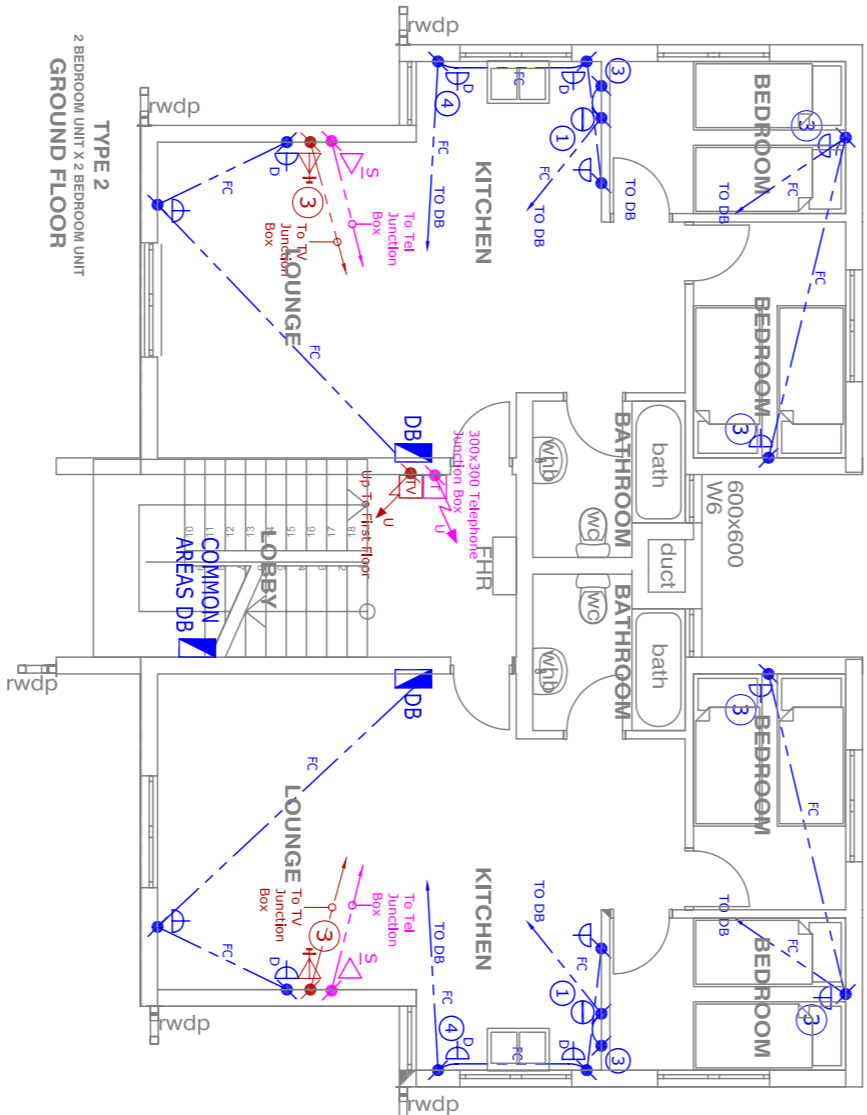
- ☐ TWO POLE ISOLATOR.  
☐ THREE POLE ISOLATOR.  
☒ FOUR POLE ISOLATOR..

-  TELEPHONE POINT.  
 TELEPHONE POINT ON PEDESTAL.  
 DIRECT OUTSIDE LINE TELEPHONE POINT (COLD BOX).  
 TV OUTLET.  
 DATA/COMMS OUTLET.

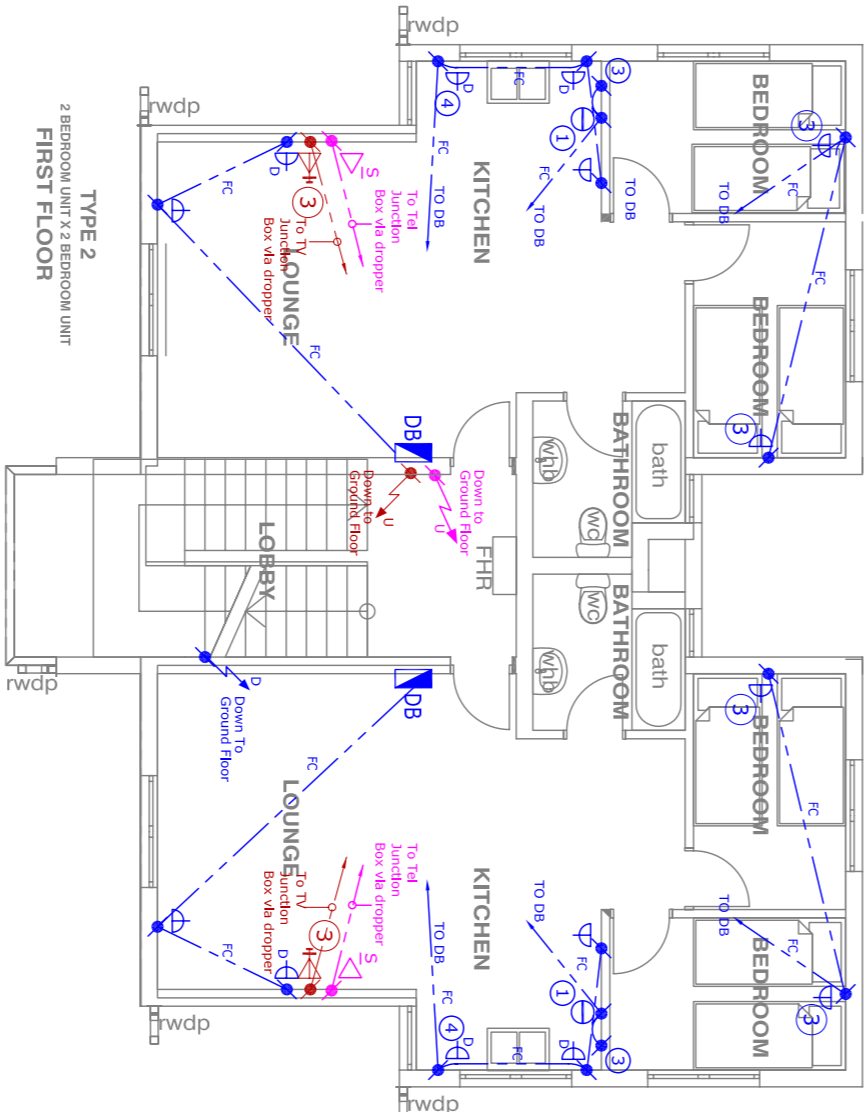
-  BELL PUSH.  
 BELL OUTLET.  
 SIGN POINT.  
 CLOCK OUTLET.  
 PHOTOCELL.

- |      |   |
|------|---|
| 3    | REFERENCE TO QUANTITY I.e. 3M0.                             |
| 2    | REFERENCE TO A DETAIL I.e. DETAIL 2.                        |
| 4    | REFERENCE TO AN ELECTRICAL NOTE I.e. NOTE 4.                |
| # 34 | REFERENCE TO A STANDARD DRAWING I.e. STANDARD DRAWING No.34 |

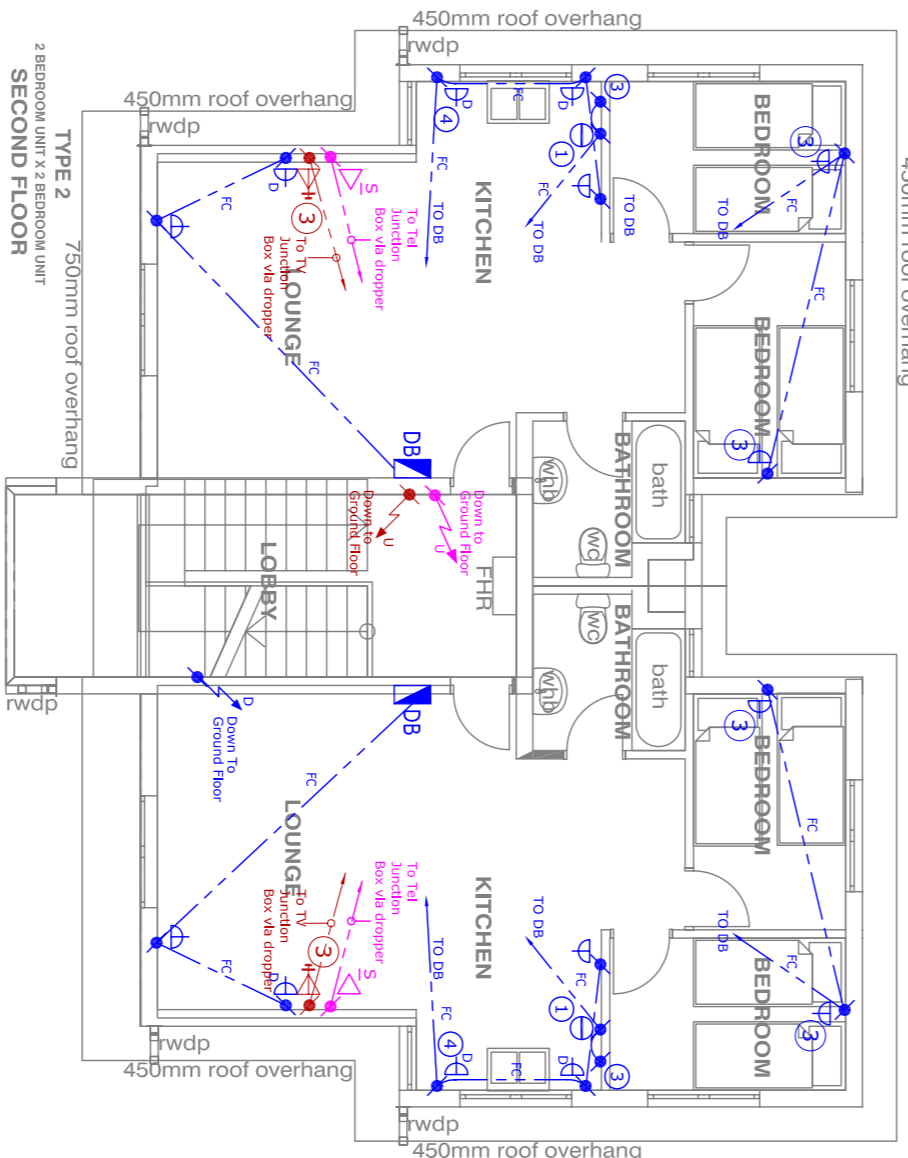
-  CABLE NUMBER - REFER CABLE SCHEDULE FOR DETAILS.  
LUMINAIRE TYPE "B" - REFER LUMINAIRE SCHEDULE.



**TYPE 2  
2 BEDROOM UNIT X 2 BEDROOM UNIT  
GROUND FLOOR**



**TYPE 2  
2 BEDROOM UNIT X 2 BEDROOM UNIT  
FIRST FLOOR**



**TYPE 2**  
**2 BEDROOM UNIT X 2 BEDROOM UNIT**  
**SECOND FLOOR**